

Foream Software Open Platform

Wi-Fi Direct Control

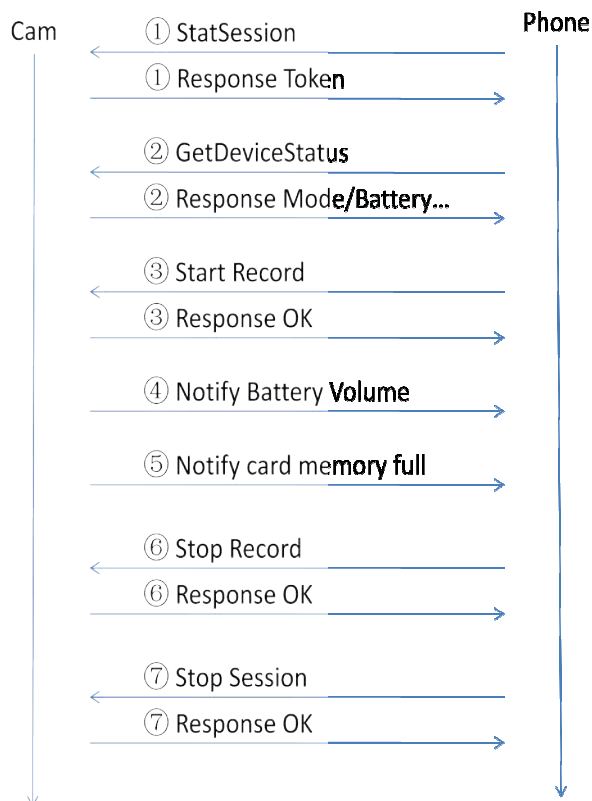
Description

Wi-Fi Direct Control is a SDK supported for Android and ios Control Foream Cam through Wi-Fi. Camera open a Wi-Fi AP and connect with smart phone. Then, Smart phone can control camera start/stop record video, set some setting in the air.

Principle

Camera using UDP port 8787 and 7878 make two connection with smart phone. One Connection is sending Cmd. And another is receiving response or notification. The data structure is JSON in transmission.

Work Flow



API And Demo

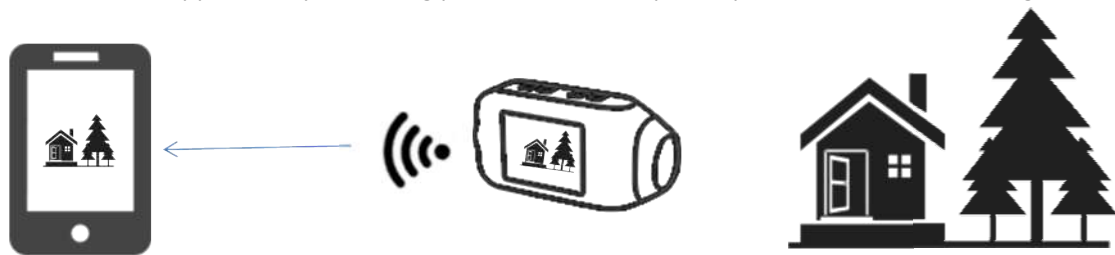
All API is on Foream Wireless Remote Control API.pdf file.

Demo is on stream_and_ctrl_demo_android.rar File.

Wi-Fi Direct Preview

Description

Foream Cam support many streaming protocol for smart phone preview camera's shooting.



Support Protocol

Foream Compass/Foream X1/Drift Ghost S/Drift Stealth 2:

Protocol Support RTSP in UDP, standard HLS and H264 raw stream in TCP.

Bit rate Support 300Kbps~5Mbps

Video Resolution Support 720P,WVGA,VGA,WQVGA

Foream Sharp Eye:

Next Generation. In Developing...

Demo

Preview Demo: stream_and_ctrl_demo_android.rar

Stream Protocol Demo: setup_file.rar。

Stream URL:

tcp://192.168.42.1:8001

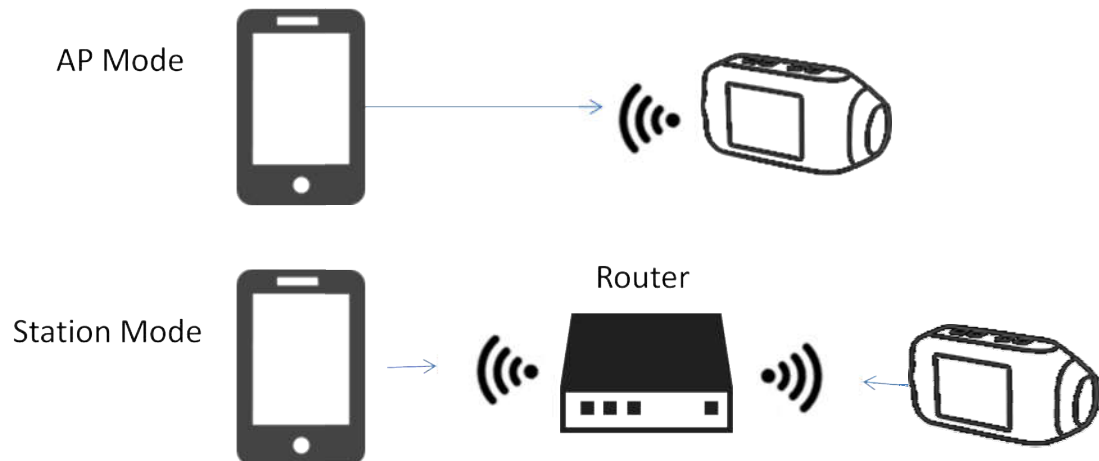
rtsp://192.168.42.1/AmbaStreamTest

http://192.168.42.1/live/stream.m3u8

Station Mode

Description

Camera's Wi-Fi support both AP Mode and Station Mode. It means camera can be a Wi-Fi adapter, and also can be a Router AP.



DEMO

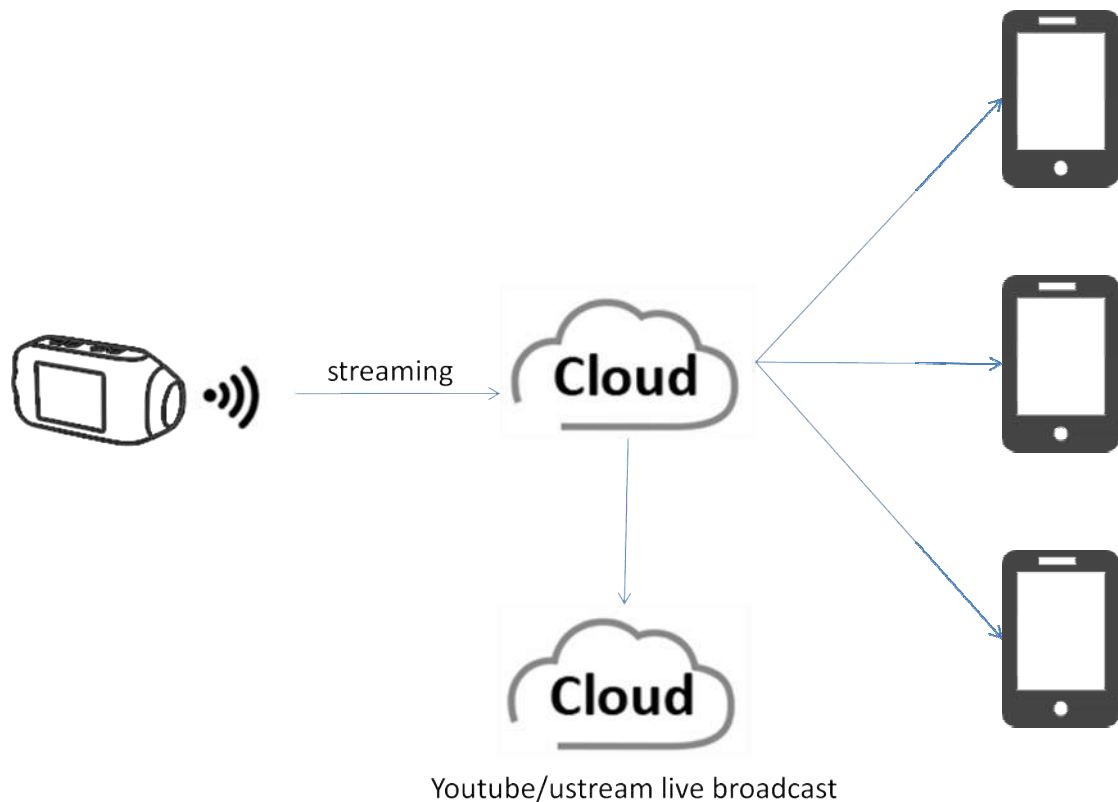
Setup Demo: [setup_file.rar](#)

Live Broadcast

Description

With Foream Cloud Platform, camera can live stream to Foream Cloud. Share the video to his friends. Meanwhile, Foream Cloud support stream it to Youtube. And make users get more friends.

Work Flow



File Cloud Upload

Description

With Foream Cloud platform, Camera can sync files to Foream Cloud in charging at home. And continue next days' recording.

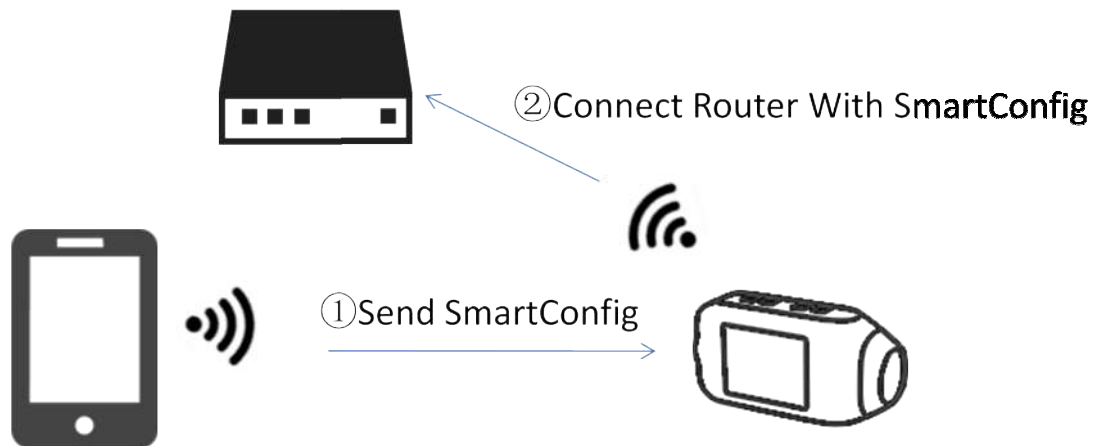
Smart Configure

Description

As Foream focus at action cam, the device has only 3 buttons and simplest screen. To setup camera connect router more easy for live broadcast and sync files, camera support Smart Configure function. It encodes data by UDP package length. This encoding can support little data broadcast sending without any connection between smart phone and camera's Wi-Fi. The advantages:

- 1) Support both Android and iOS Platform. Support most of home router.
- 2) Broadcast with no connection. Very good UE. Configure setting In QRCode mode ,user must focus the cam and QRCode's direction and hard to success. Configure setting in Camera AP

mode, user have to setup the connection between camera and smart phone. In Smart Configure, user just click a button.



Demo

Go to our official App.